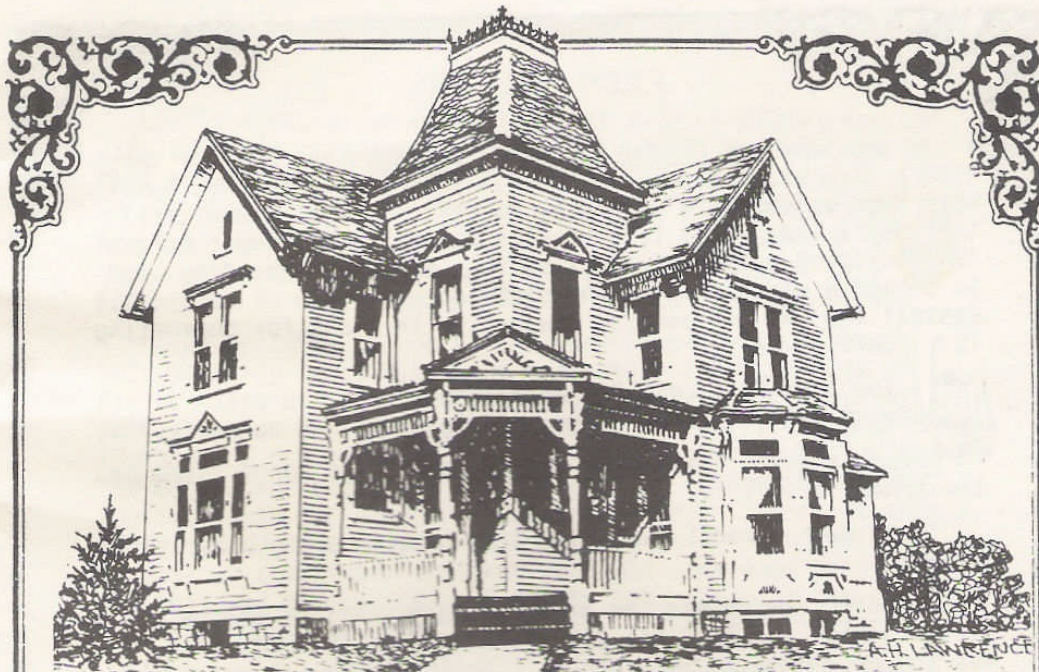


803 NORTH SPRING STREET

Frederick Fehrman was a German immigrant who settled in Kane County in 1849. He was a dry goods merchant by trade, served as alderman from 1875-1881, and was one of the first trustees of St. John's German Lutheran Evangelical Church. Frederick purchased three lots from Grote & Waldron in 1881 and, in 1889, he sold the third lot and gave the first two lots to his two sons, Albert and Emil.

Albert and Emil continued to operate the family store at 19 Douglas Avenue after their father's death. Albert served as an alderman for ten years, 1891-1902, and was elected mayor of Elgin several times between 1909 and 1919.



In 1909, the Elgin News told of a confrontation between Albert and the famous temperance leader, Carrie Nation. She spoke with him at his store about keeping saloons in Elgin. Fehrman told he he favored keeping saloons but only if regulated.

Albert built this house in 1889 at a cost of \$3,500 to \$4,000. According to newspaper accounts this was the second most expensive home built in Elgin that year, the most expensive home being the John Newman home at 321 Division (The Buttermans).

This clapboard sided house is predominately EASTLAKE, though it contains a synthesis of styles. Typical Eastlake details include the sunburst motif which is carried in detailing atop the porch columns; pediments with sunburst motif over the tower window and primary west facade window which matches the porch pediment. Another sunburst appears beneath the south bay windows. The turned porch columns and spindles and continuity of jagged edge wood detailing below the roofline are all typical of Eastlake. There is an Italianate influence in the square tower topped with cast iron cresting. And, by the way, only a few structures are left in Elgin retaining original cresting. Note how paint has been used to articulate the details.

Inside, note the beautiful leaded glass windows in the entry, the triple windows and transom in the front parlor, and the bay window and transom in the fireplace room. Door and window casings have carved oak leaves and acorns to indicate oak wood. Note the intricate brass hardware on the single slide pocket door between the front parlor and fireplace room. The room with the fireplace was originally the dining room, and the present dining room was the kitchen. The current kitchen is thought to have the summer kitchen. Doors still contain their original hardware.