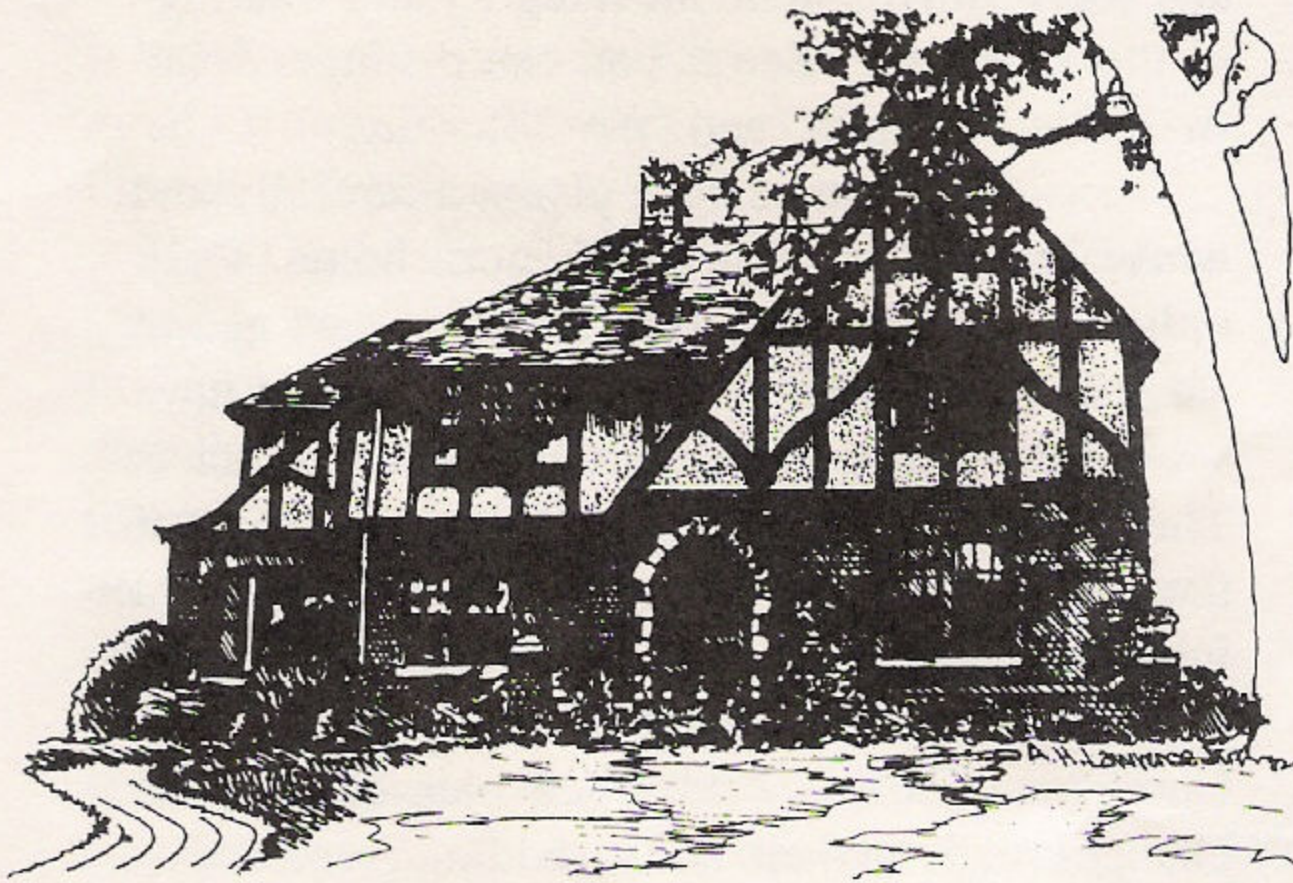


110 Slade Avenue

[Upon entering, please go left, directly into the living room. From there, cross back through the foyer to enter the dining room.]

A few years ago a neighborhood newsletter contained an article about the families who, when they needed to move from one house to another, stayed in the same neighborhood. This house has been home to only two families, each of whom followed this trend. Edward F. and Augusta Howard, the first owners, had previously lived at 809 Prospect Avenue before building this house at 110 Slade Ave. The current owners moved to this home (after admiring it for fourteen years) from only one block away!

The first resident, Edward Howard, was the Superintendent of the Illinois Watch Case Company which stood at the corner of Slade and Dundee Avenues in the building now housed by Katy Industries. IWCC employees lived in many homes in this neighborhood. A five minute commute to work was very attractive even fifty years ago! His son, Gordon, was involved in the same business and became an editor of "The Watch Word", a publication for and about employees of the Watch Factory. Gordon meticulously dated changes he made to the house. Light plates, sill covers, and other details have the date and time of installation printed on them. A water color painting had the temperature and humidity on the day it was put on the wall.



This English Tudor Revival was built in 1928, making it a contemporary of the house at 355 Jefferson and a "young" historic house. The asymmetrical front gable entryway and three-window banding with "6 over 1" panes are common to both houses. While both houses have a rounded front arch entry, the details differ. Stepped brick surround the entry at 355 Jefferson while 110 Slade has rusticated tabbed stone. There is half-timber detailing (wood with stucco infill) on the second story, a common Tudor element. A classical front patio and balustrade create a picturesque setting common to the romantic revivals of this period.

Inside the home there are unique "modern" conveniences. The front hall closet's light goes on automatically when the door opens. There is a similar light set-up in the garage. The living room, which contains a beautifully carved fireplace mantle, leads to a sunroom with windows on three sides, another design element which is shared by 355 Jefferson. Other interesting details in the house include:

- classic wooden curved stair railing
- velvet theater rope used as stair railing
- the tables in the living room were purchased from the Howard estate and are probably original to the house
- phone niche with bell box in the hall
- all hardware is original
- milk delivery door in the kitchen
- sleeping room off master bedroom
- original corner desk in upstairs hall
- original mirrors on bedroom doors

Gordon Deacon of the Deacon Chime Company presented the Edward Howard family with some dinner chimes as a house-warming gift. The current owners have displayed these chimes proudly in a unique picture treatment in the dining room.

On display in the kitchen are the original working drawings of the builder/designer, Coleman Miller. The next major projects are remodeling the kitchen and changing the garage into a vaulted family room.